



IWK VERPACKUNGSTECHNIK GMBH



Packaging Experts for Multicolor Tube Filling

A close-up photograph of an ice cream production machine. A black nozzle is dispensing a swirl of white and pink soft-serve ice cream onto a golden wafer cone. The background is slightly blurred, showing other parts of the machinery and a wooden surface.

01

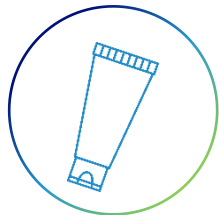
WE FILL & PACK EVERYTHING*

*ok almost everything!

OUR PASSION

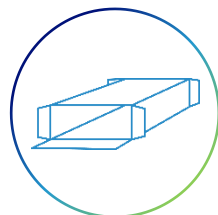
INDIVIDUAL SOLUTIONS

FIND THE BEST SOLUTION FOR YOUR PRODUCT!



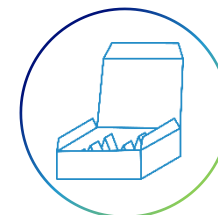
TUBE FILLING

- Toothpaste
- Skin care
- Hair care
- Ointments
- Gels
- Glue
- Silicone
- Food
- etc.



VERTICAL/HORIZONTAL CARTONING

- Tubes
- Bottles / Vials
- Jars
- Pouches / Stick
Packs
- Blister
- Soaps
- KITs
- Aerosols
- etc.



TOPLOAD CARTONING

- Vials
- Ampoules
- Applicators
- Diagnostic devices
- Inhalers
- Pens
- Syringes
- etc.

* only exciting challenges

02

**THERE IS NO UNUSUAL
APPLICATION***



OUR PROMISE

EXCELLENT
PERFORMANCE

TUBE FILLING & CARTONING MACHINES

**128 YEARS OF INNOVATIVE
PACKAGING SOLUTIONS –
AND MORE THAN
10,000 INSTALLATIONS!**

TUBE FEEDING & FILLING MACHINES



Manual feeding

- up to 40 tubes/min.

Semi automated feeding

- up to 80 tubes/min.

Automated feeding

- up to 760 tubes/min.



IWK FP Series

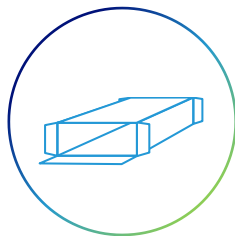
- FP 8 (up to 40 tubes/min.)
- FP 10 (up to 70 tubes/min.)
- FP Single/Double/Triple Head (up to 300 tubes/min.)
- FP Aseptic Platform (up to 220 tubes/min.)

IWK TFS Series

- TFS 80-6/-8 (up to 760 tubes/min.)

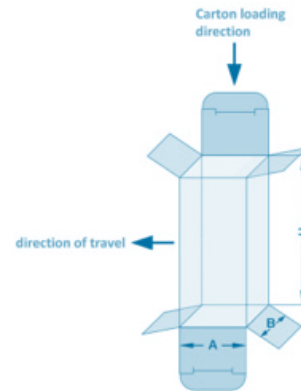


CARTONING MACHINES



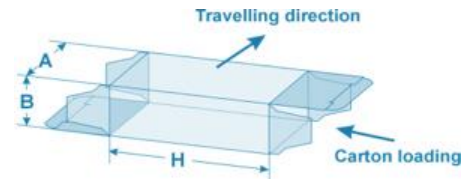
Vertical Cartoner

- VI 5 (up to 75 cartons/min.)
- VC 5 (up to 120 cartons/min.)



Horizontal Cartoner

- SI Series (up to 100 cartons/min.)
- SC Series (up to 450 cartons/min.)
- HC 5 (up to 200 cartons/min.)
- SC Soap (up to 1000 cartons/min.)



TOPLOAD CARTONING MACHINE

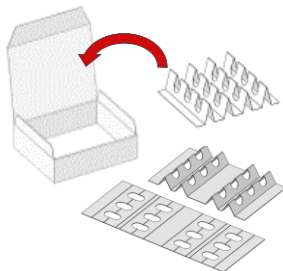


Output

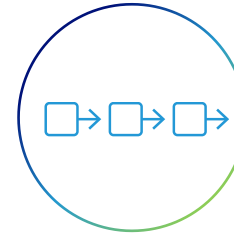
- Up to 180 cartons/min.

Size Range

- Max. size carton blank 400 x 500mm
- Carton – length (A): 90 – 200 mm
- Carton – depth (B): 50 – 150 mm
- Carton – height (C): 15 – 80 mm



TURN-KEY LINES & LINE INTEGRATIONS



03

THE ART OF MAKING STRIPES

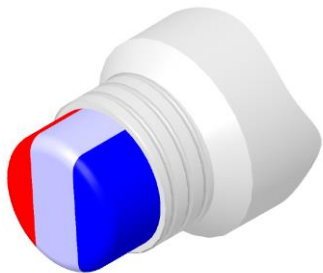


OUR DRIVE

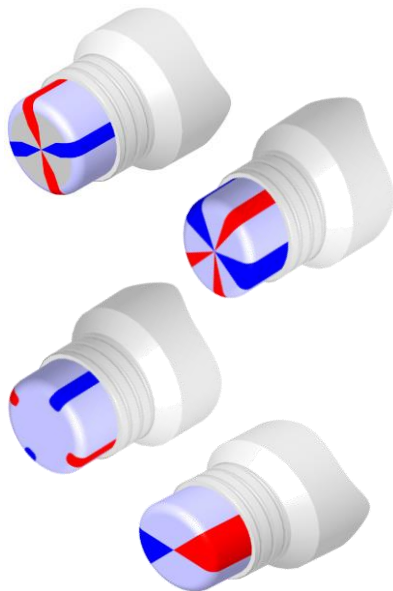
EXCELLENT
TECHNOLOGY

AN INGENIOUS SOLUTION - VARIOUS METHODS

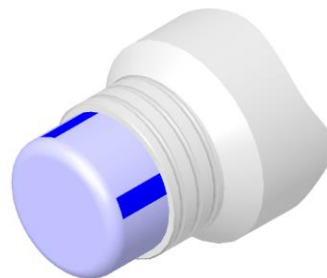
SANDWICH METHOD



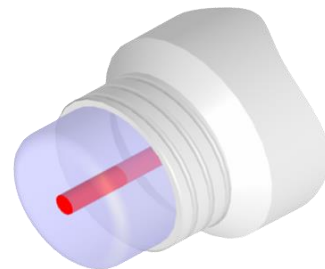
SOLID COLOUR STRIPES



SURFACE STRIPS



CORE STRIPS



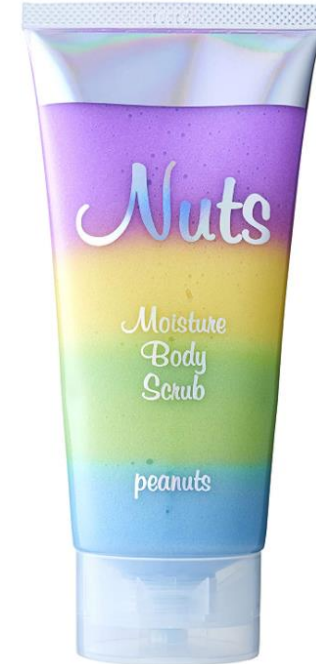
SWIRL CAPABILITY

- To execute standard swirl:
turning of the tube lifter during the filling process is necessary
- A multi color dosing system needs to be installed



DIFFERENT PRODUCT LAYER (COCKTAIL) CAPABILITY

- To fill different product layers, different filling systems are necessary
- On FP platform already realised, depending on the different layers the output of the machine is reduced
- 4 colours requires 4 filling systems to be installed



04

IN PERFECT SHAPE



Contour Seal



Oval Tubes





Ralf Metz

Area Sales Director Asia

WE ARE YOUR PACKAGING EXPERTS!

- Experience in tube filling for 128 Years
- TOP supplier for Colgate, P&G, GSK for toothpaste
- The largest installed base of highspeed and super highspeed toothpaste fillers worldwide
- Global service with local engineers

IWK

an  company